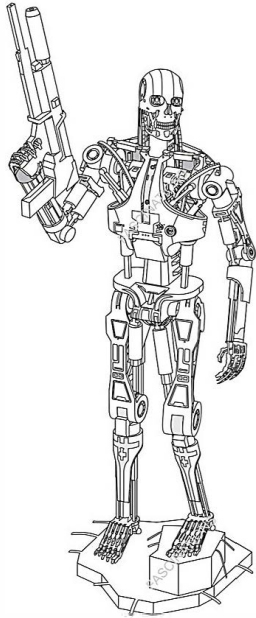


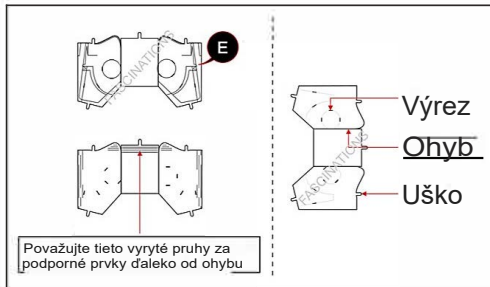


Odporúčame vám navštíviť www.metalearth.com/360/icx141 pozrieť si hotový model pred zostavením vlastného

ICX141 T-800 ENDOSKELETON



VYTVÁRAŤ TIE NAJLEPŠIE SPOJENIA



Legenda:

- E** Gravírovaná/Farebná strana
- NE** Negravírovaná/Strieborná strana
- Bod upozornenia
- Vložte uško a ohnite o 90 stupňov
- Vložte uško a otočte o 90 stupňov

Odporúčacie nástroje:

Kliešte na drôt: užitočné na odobranie dielov z plechov.



Pinzeta alebo ihlové kliešte: užitočné pri skladaní dielov, ohýbaní a krútení ušík.



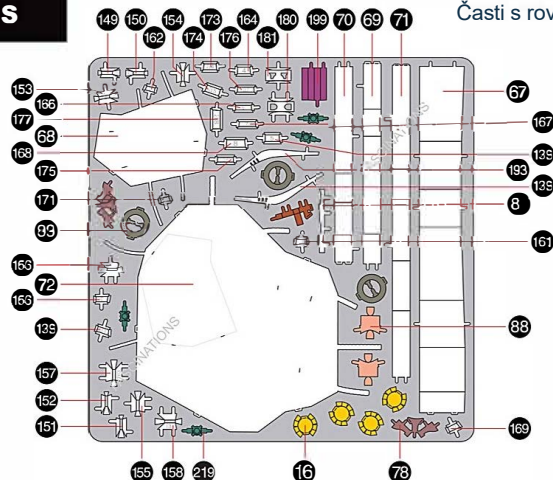
Tip pre montáž:

Ak je to potrebné, mierne skrúťte záložky, aby diely držali pohromade, potom ich rozvíňte a ohnite nadol.

METAL SHEETS

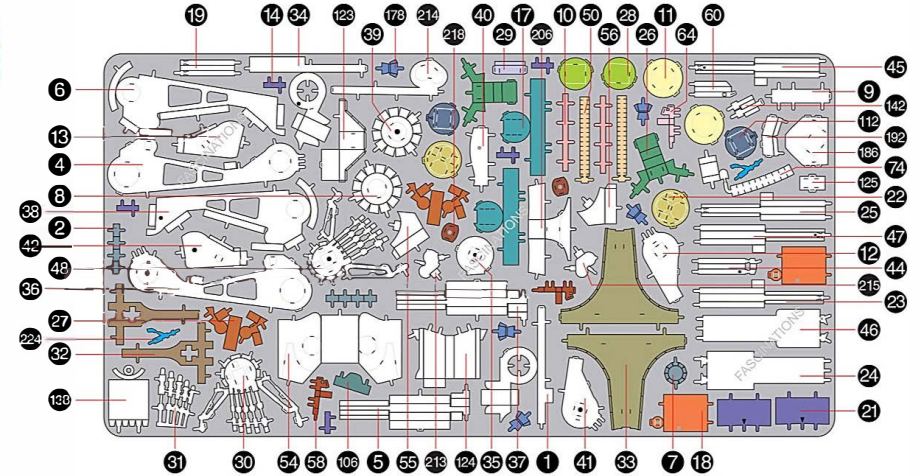
Časti s rovnakou farbou sú duplikáty

A

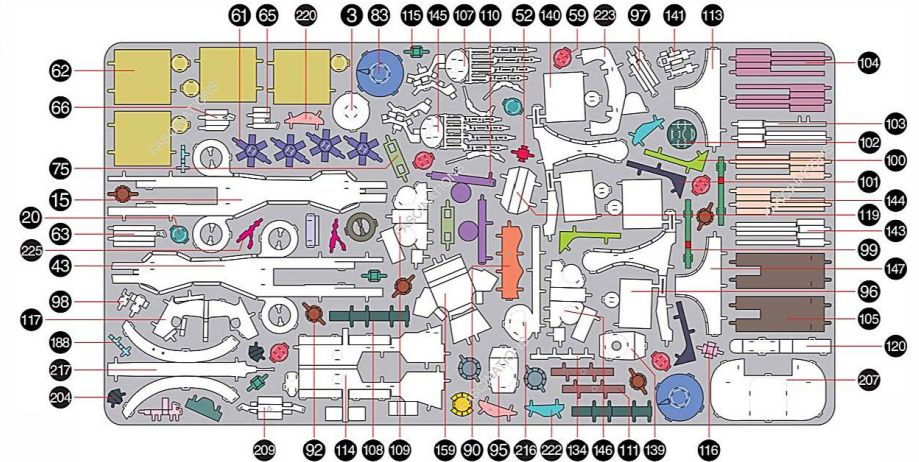


In order to avoid possible injury from sharp edges, please carefully discard the metal sheets after parts have been removed

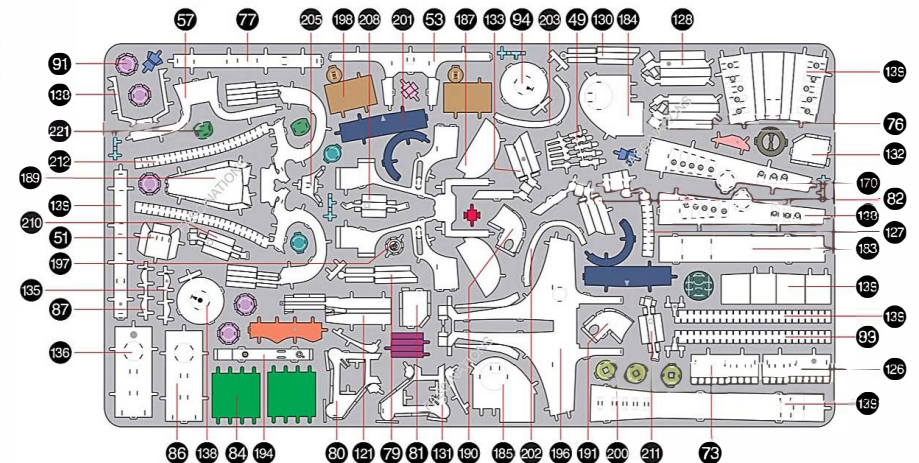
B



C

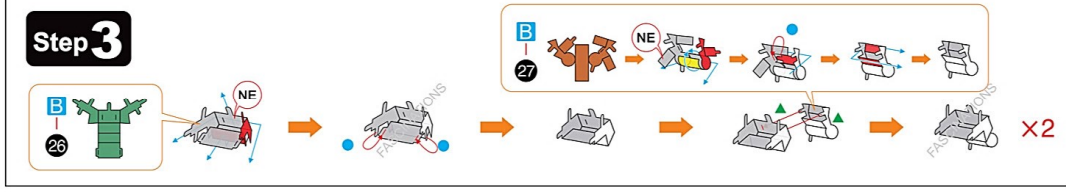
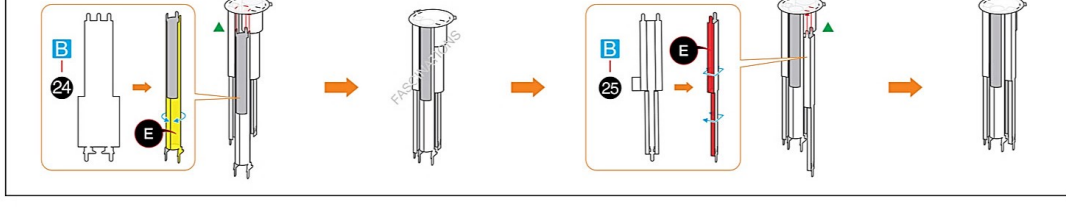
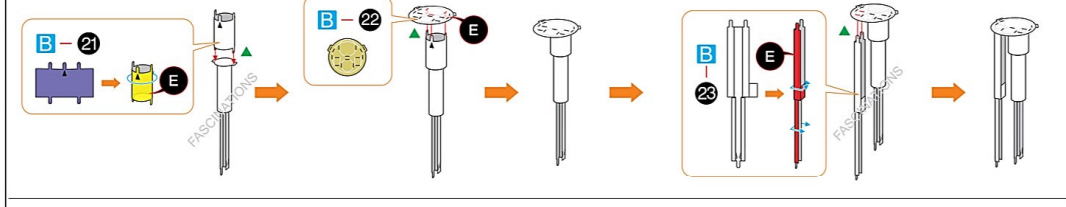
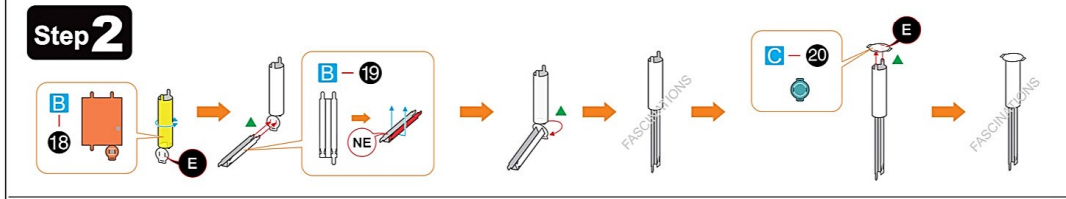
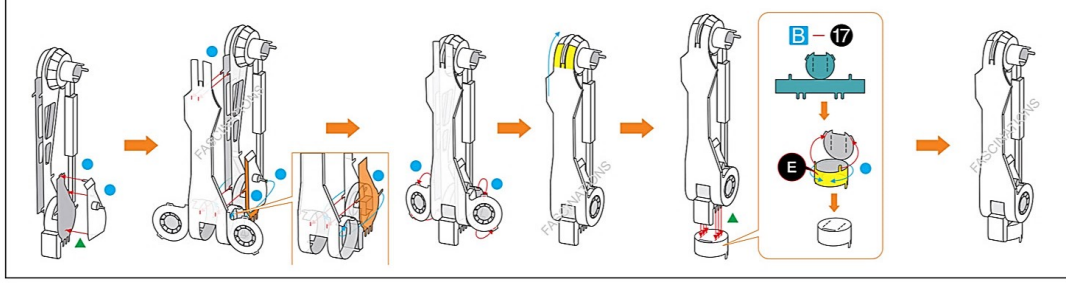
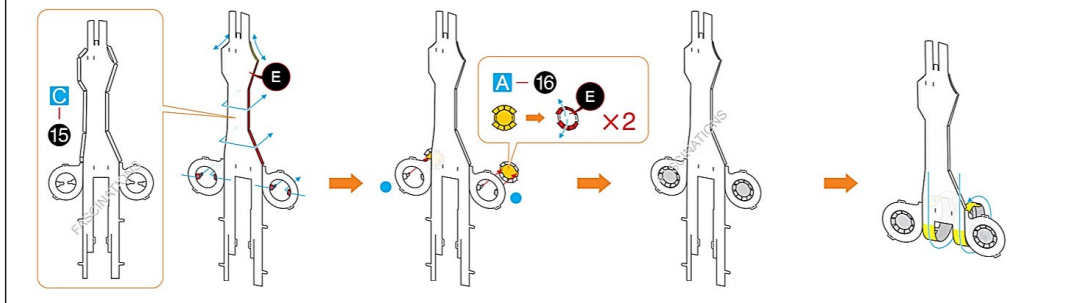
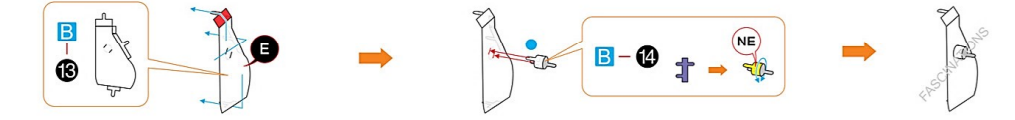
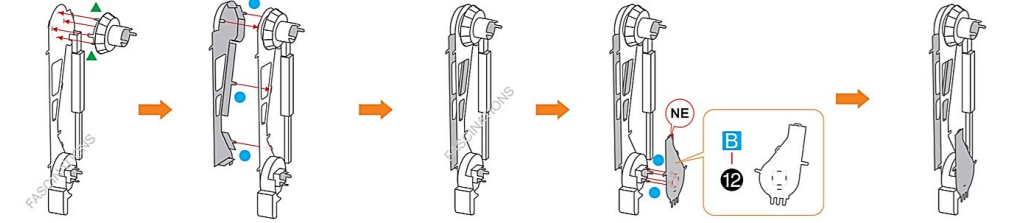
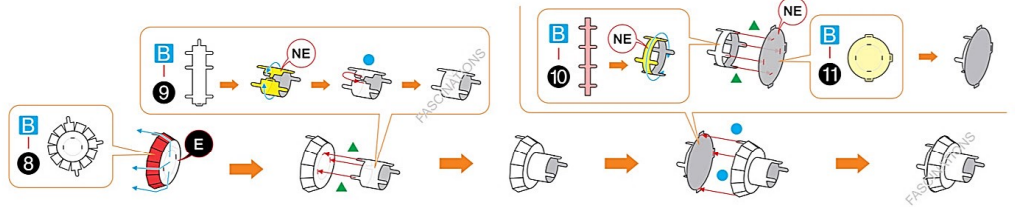
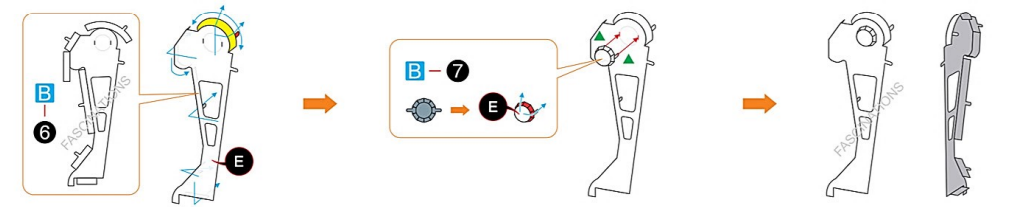
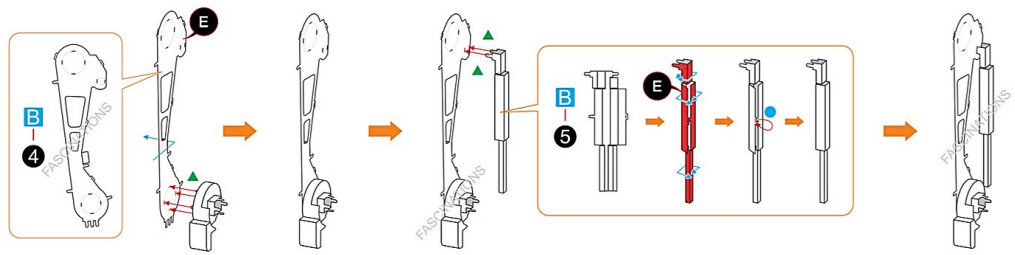
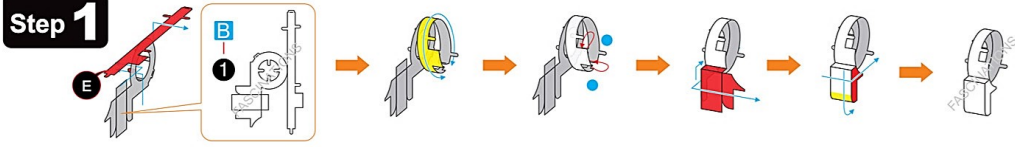


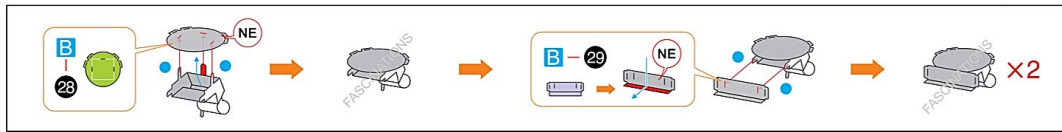
D



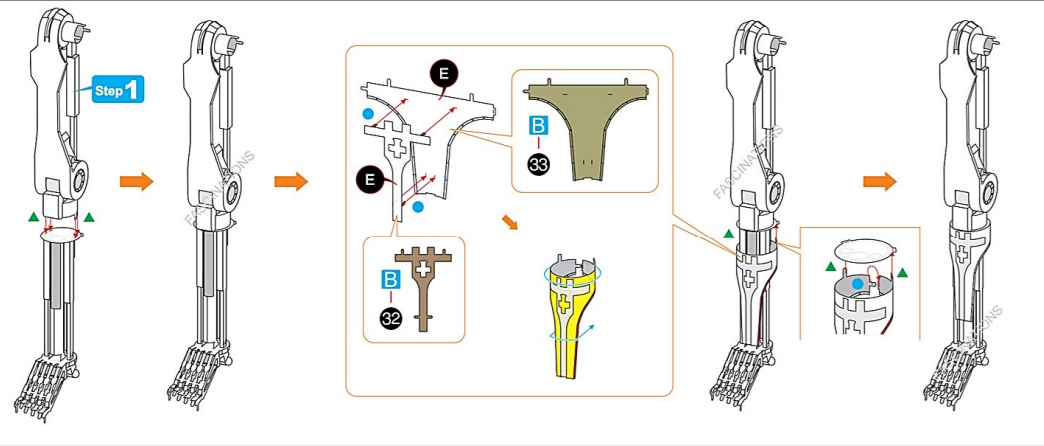
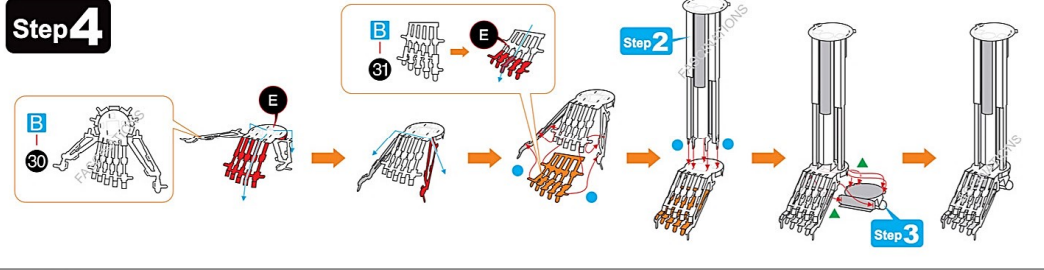
ASSEMBLY STEPS

Step 1

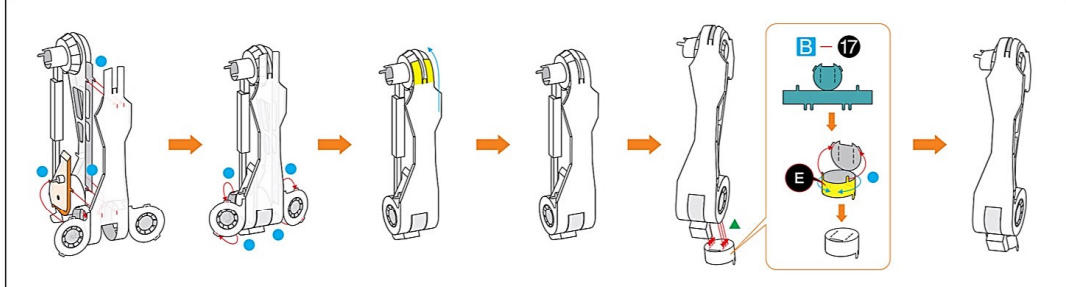
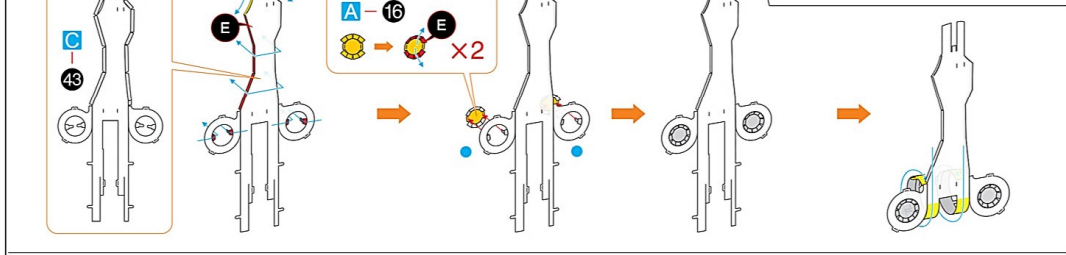
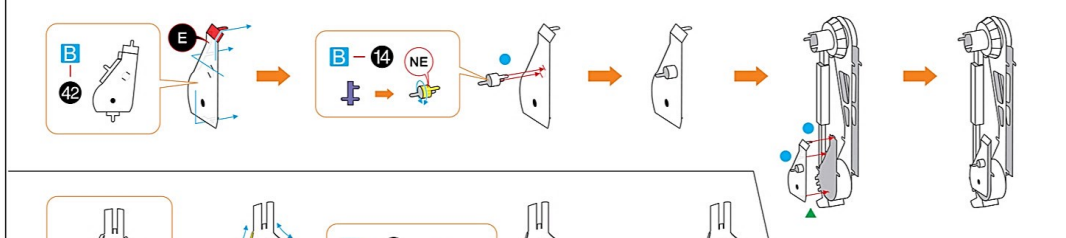
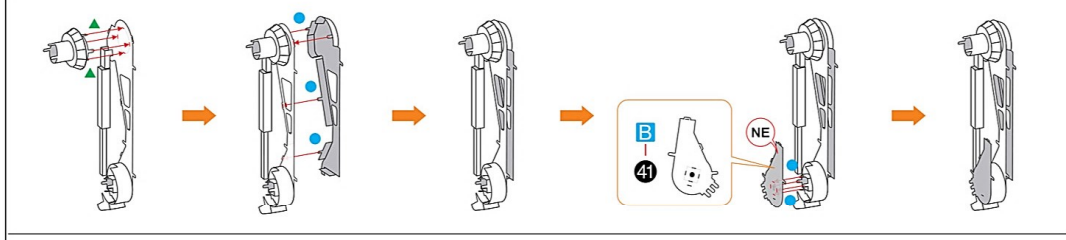
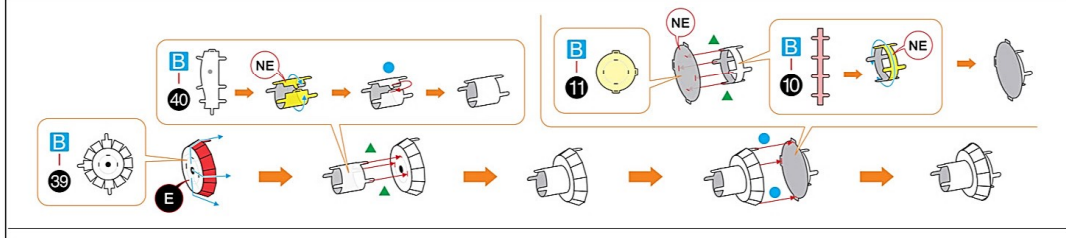
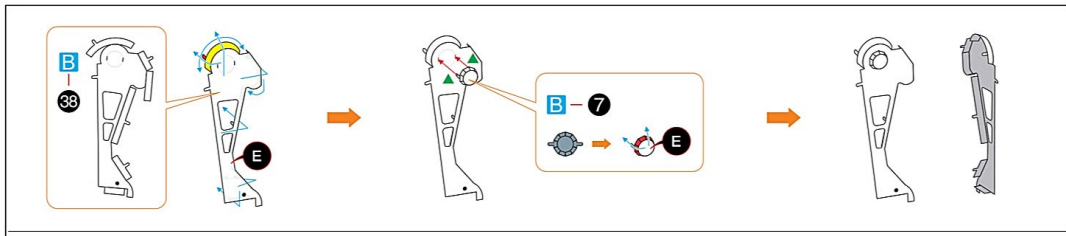
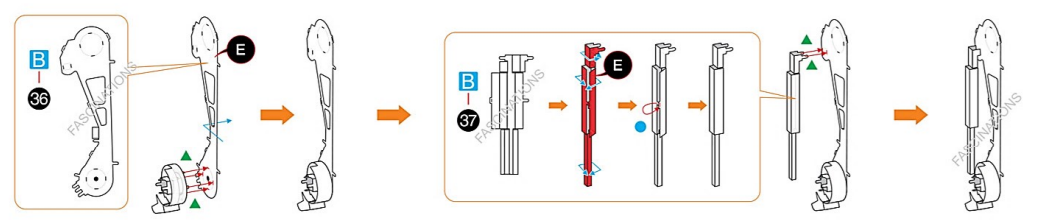
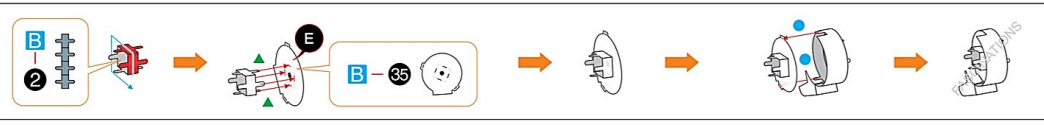
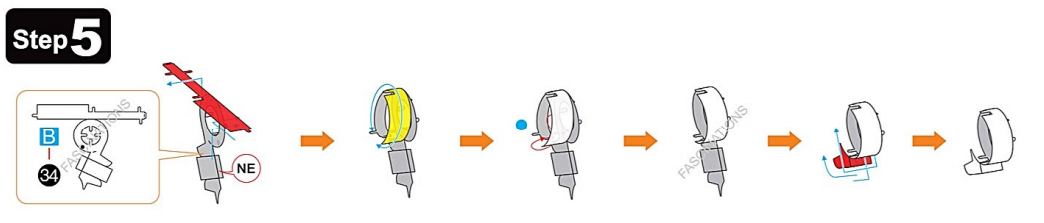




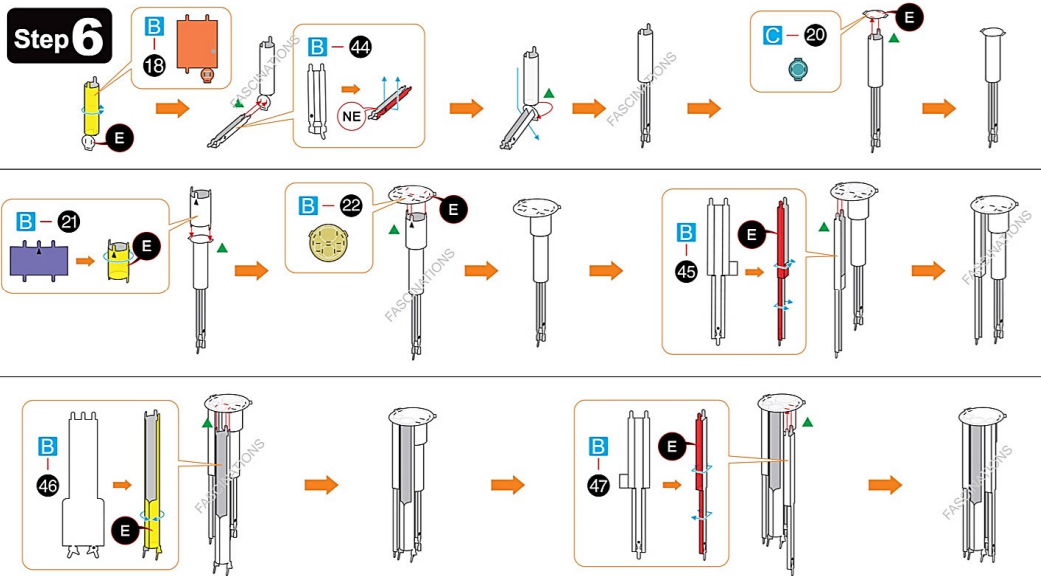
Step 4



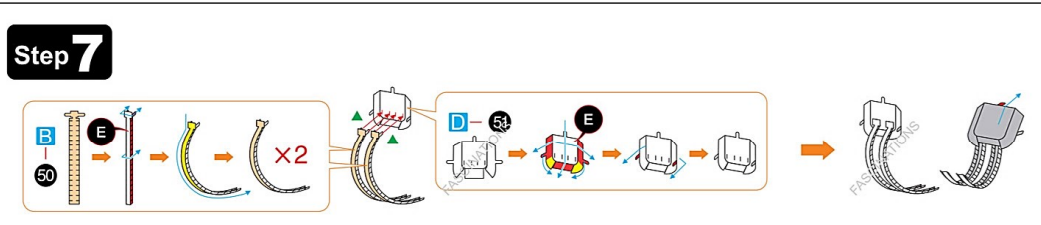
Step 5



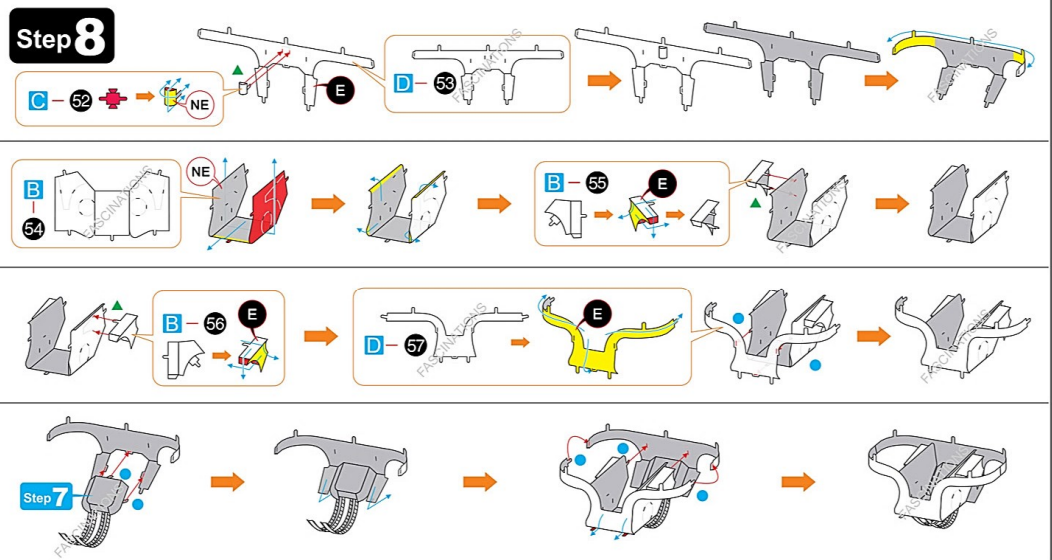
Step 6



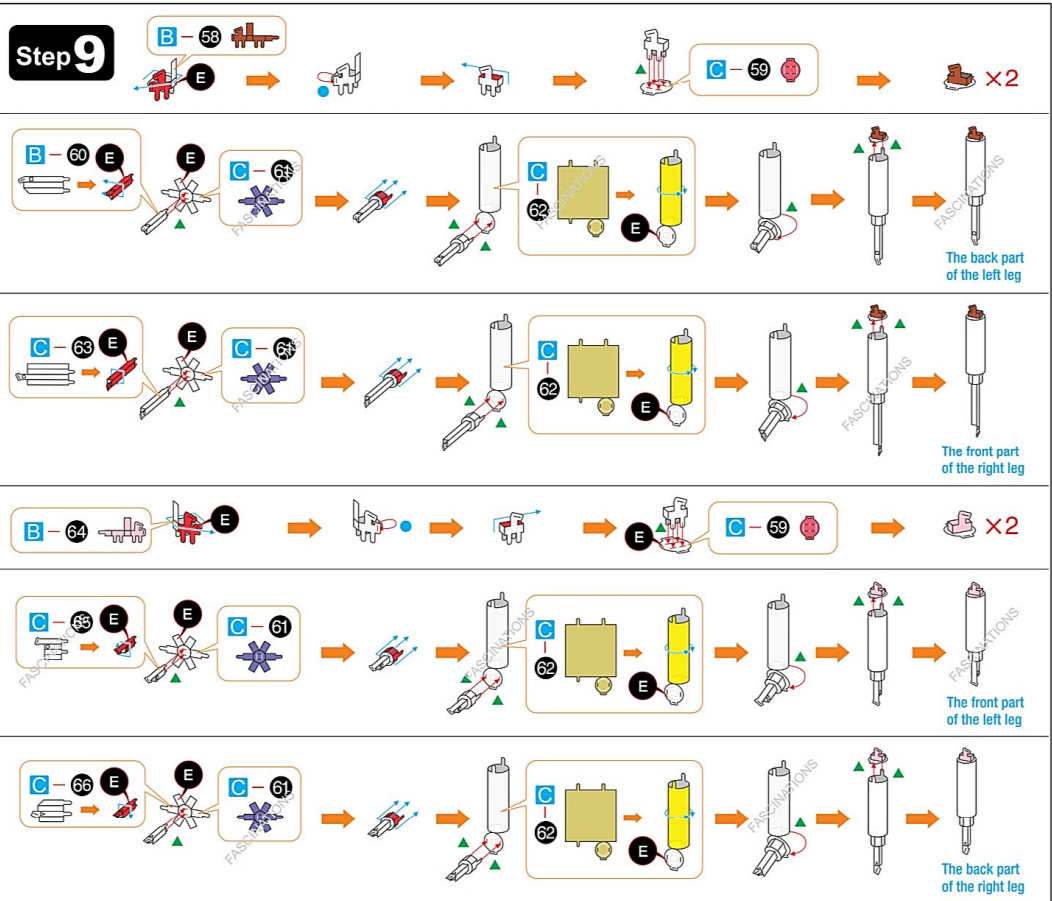
Step 7



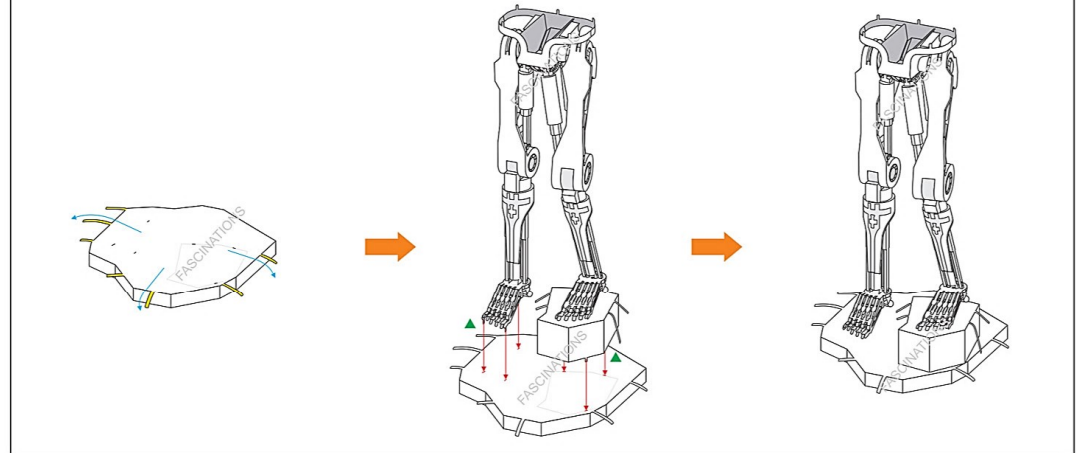
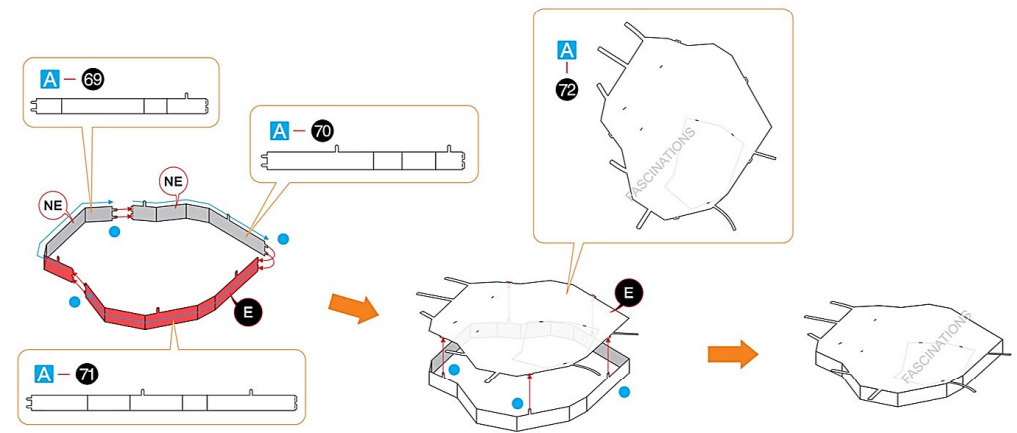
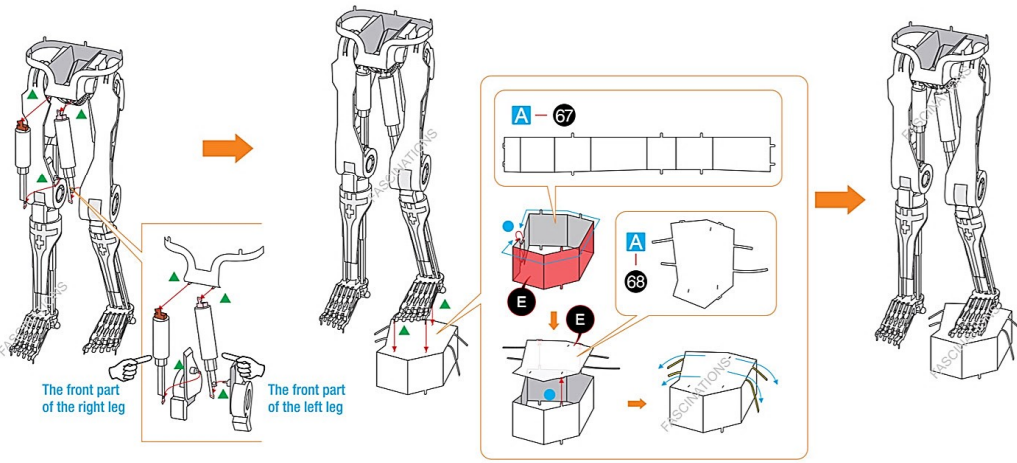
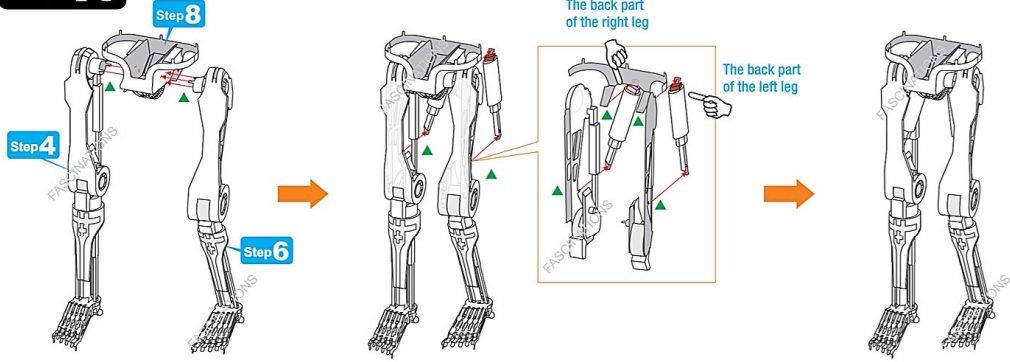
Step 8



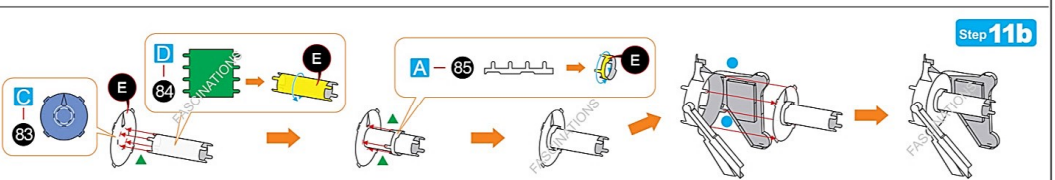
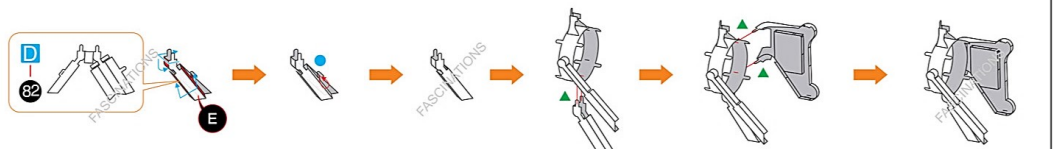
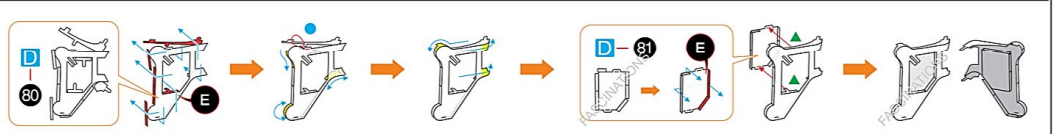
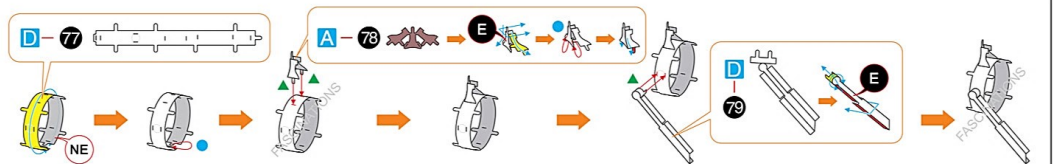
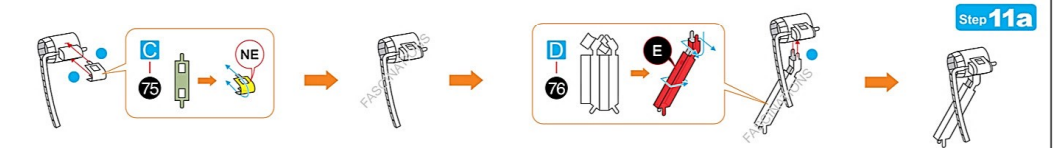
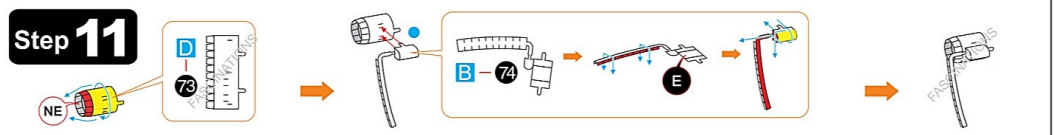
Step 9



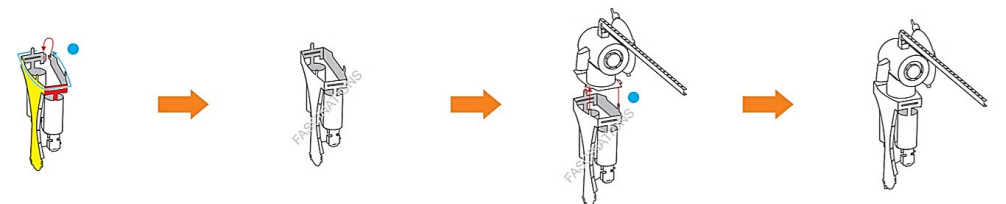
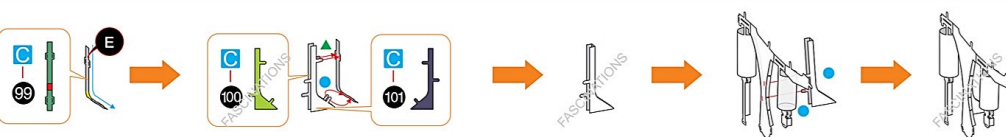
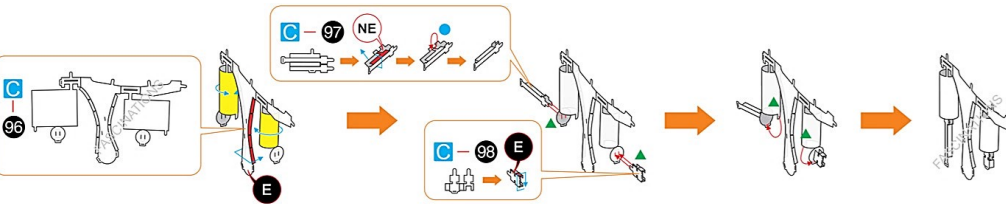
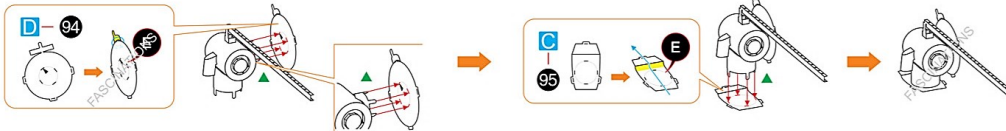
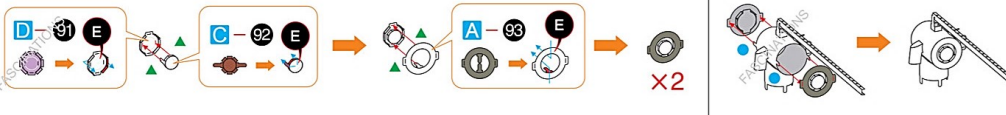
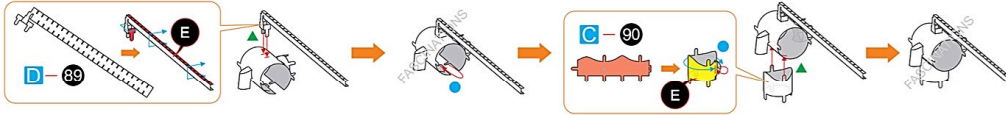
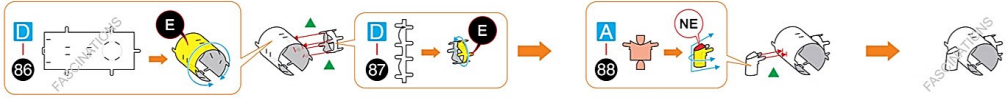
Step 10



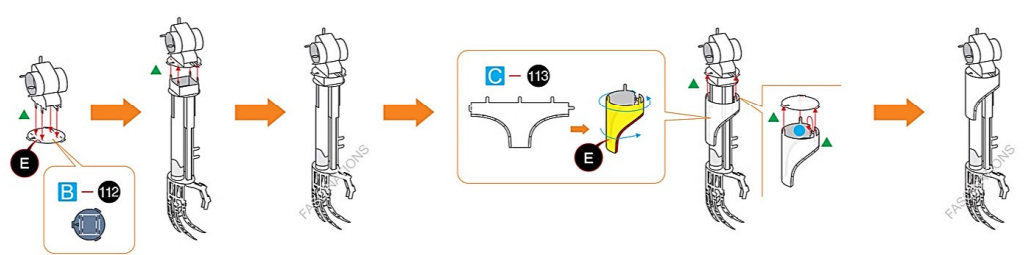
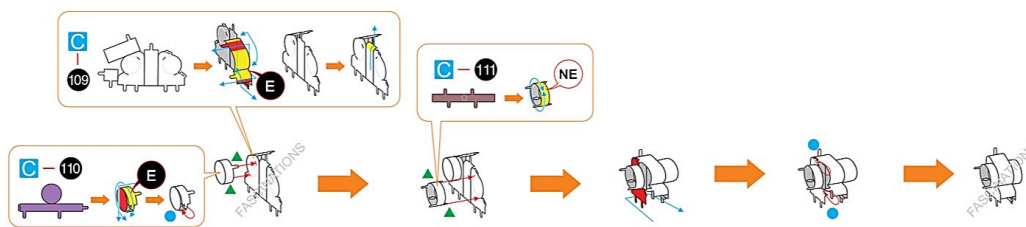
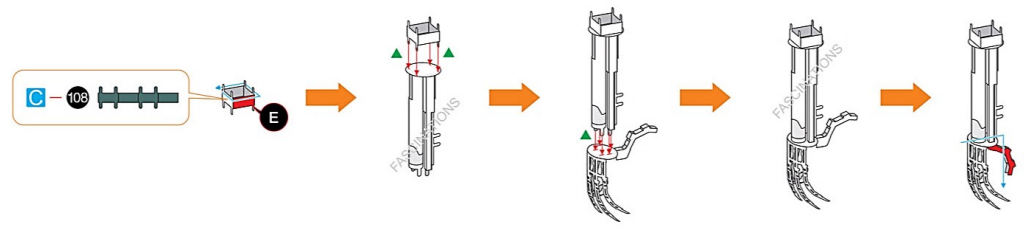
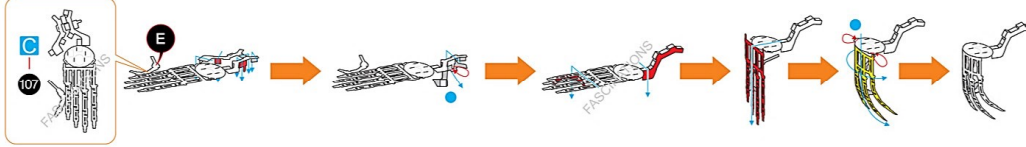
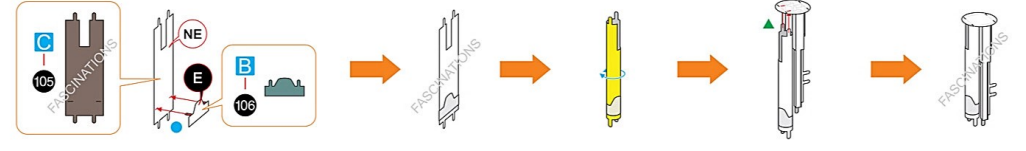
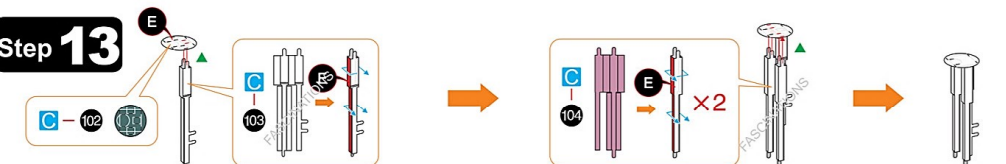
Step 11



Step 12



Step 13



Step 14

